



**NORTHEAST NINJAS**  
FRIEND, PHILOSOPHER & GUIDE

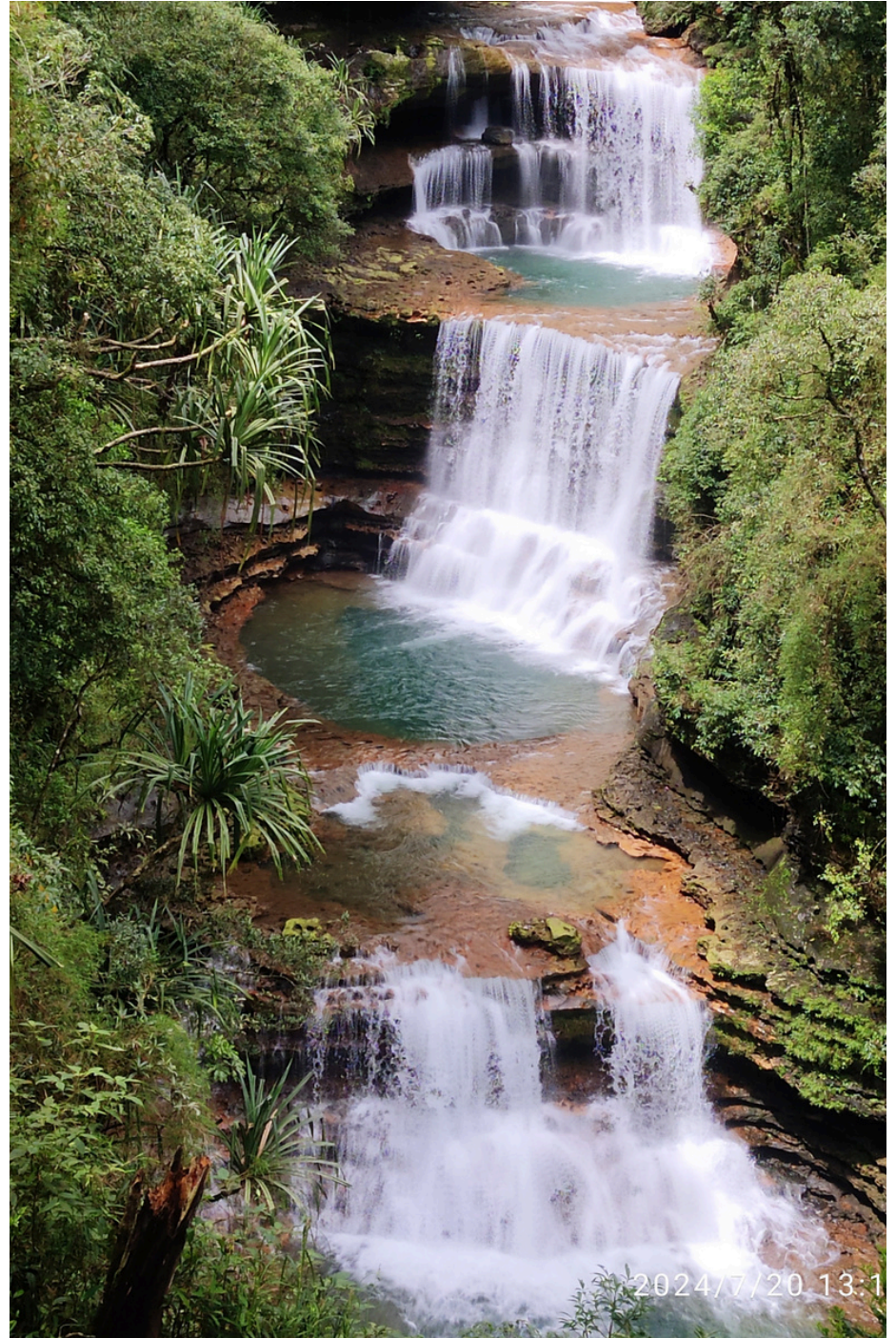
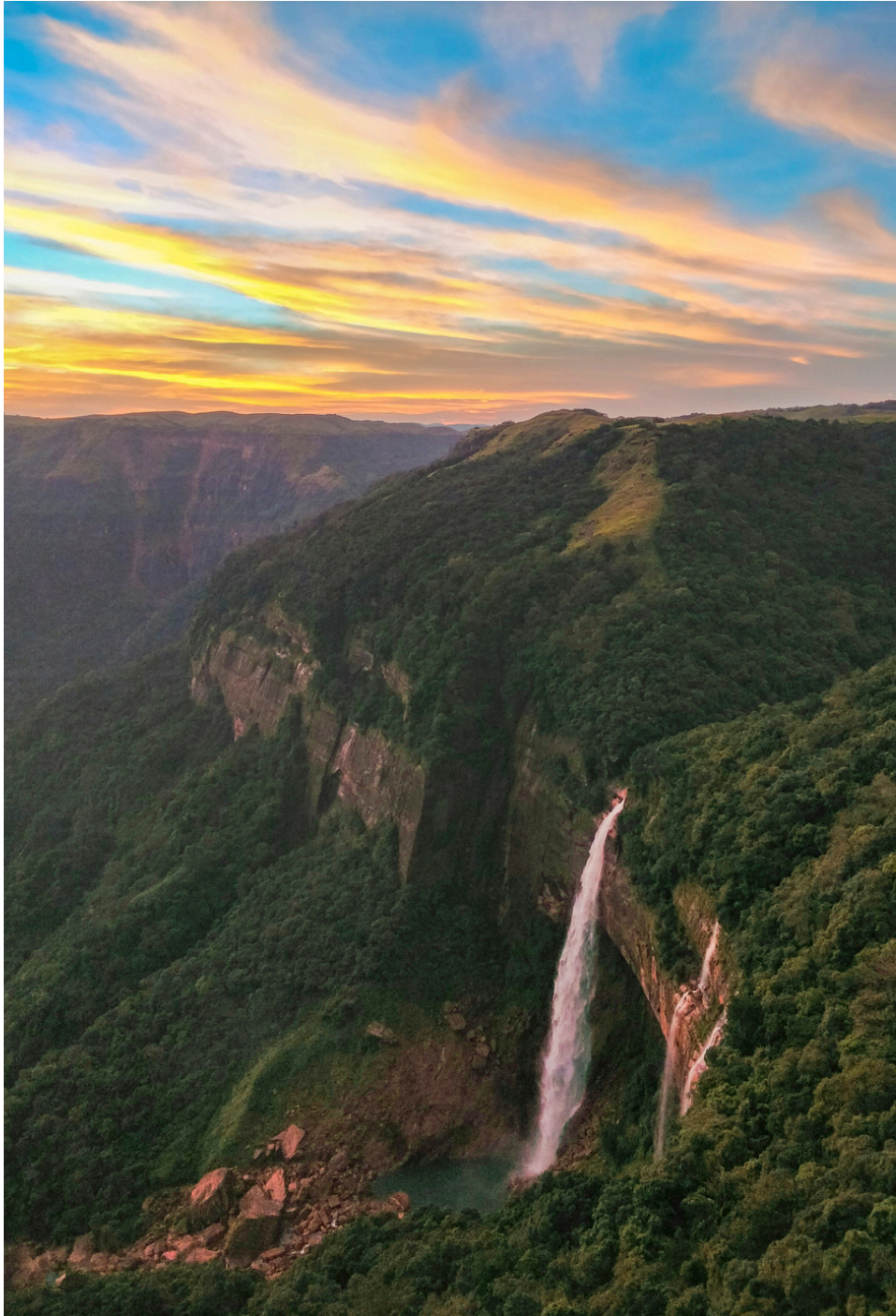


**7002862735**  
**6290771585**

**MAGICAL**

**MEGHALAYA**

**5 DAYS 4 NIGHTS**

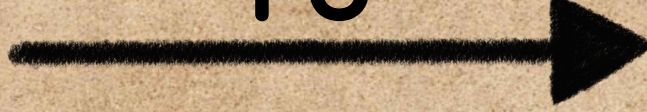


# DAY 01

TO



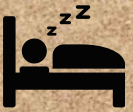
GUWAHATI



SHILLONG



On arrival at Guwahati station/ Airport, We will receive you & drive you to Shillong. On the way we will visit famous **UMIAM LAKE**. After reaching at Shillong we will visit few more attractions. After that check in at our hotel. In the evening visit **POLICE BAZAR**.



**SPEND YOUR NIGHT AT SHILLONG**

**UMIAM LAKE**



**WARDS LAKE**



**CATHEDRAL CHURCH**



**GOLF LINK**



**POLICE BAZAR**



# ACCOMMODATION IN SHILLONG



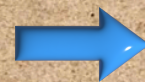
Experience the Serenity of Shillong Escape to the picturesque landscapes of Shillong with our hand picked Hotels, HOME STAY & GUEST HOUSE. properties offer stunning views, modern amenities, and exceptional hospitality for a memorable stay.



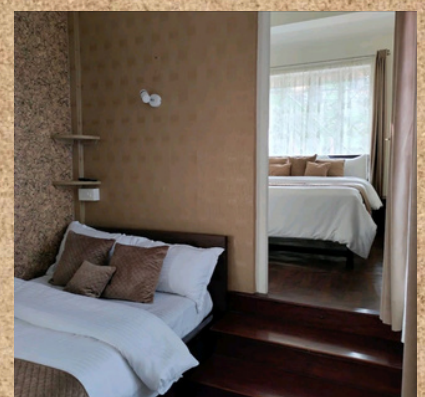
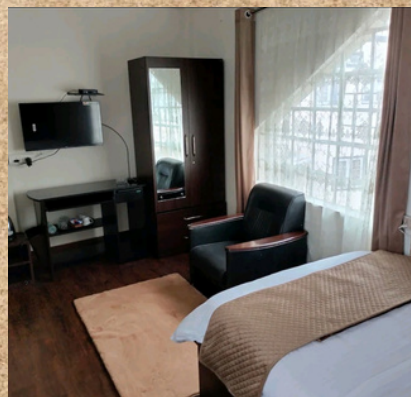
**SHILLONG GUEST HOUSE**



**SHILLONG HOMESTAY**



**SHILLONG BOUTIQUE HOMESTAY, PERFECT FOR COUPLE**

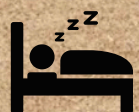


**SHILLONG APARTMENT, PERFECT FOR FAMILY**

📍 **SHILLONG** **TO** 📍 **DAWKI**



After breakfast, we will start a dream journey towards Dawki, en route we will stop at **Laitlum Canyon**, a majestic viewpoint where you would like to stay there forever. Later we will stop to wonder about the beauty of **Krangsuri Falls**, **Phi Phi Falls** and more. In the afternoon we reach the world famous transparent river, that is **Dawki River** where you would surely love to boat through the river canyon. Evening stay at a beautiful hotel at Dawki.



**SPEND YOUR NIGHT AT DAWKI**

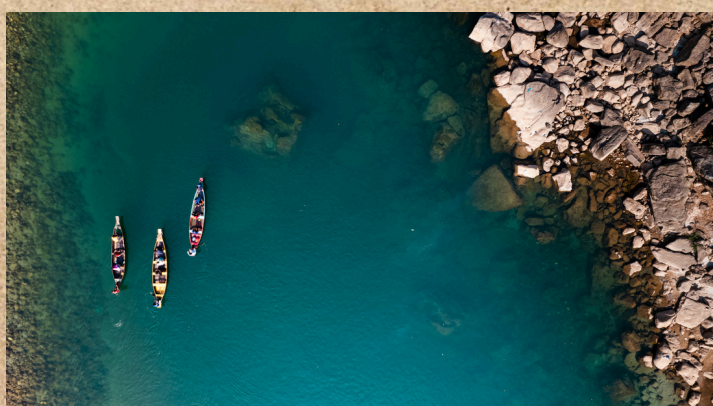


**LAITLUM CANYON**



**PHE PHE FALLS**

**KRANGSURI FALLS**



**UMNGOT RIVER- DAWKI**

# ACCOMMODATION IN DAWKI



Experience the calmness of dawki escape to the picturesque landscapes of jaintia hills with our hand picked Hotels, home stays & guest house. properties offer stunning views, modern amenities, and exceptional hospitality for a memorable stay.



**DAWKI GUEST HOUSE**



**DAWKI RESORT**

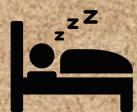


**DAWKI VIEW GUEST HOUSE**

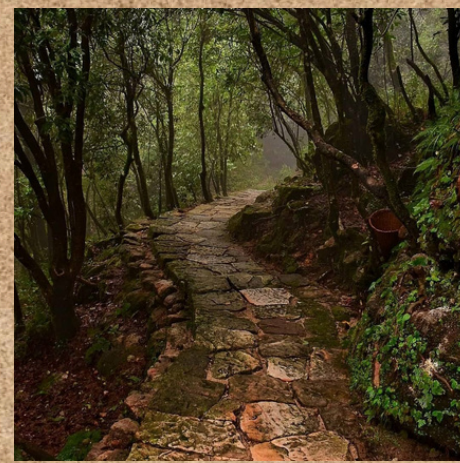
📍 **DAWKI** **TO** **CHERRAPUNJI** 📍



After breakfast, following to the land of thick rainforests and pretty mist the cleanest village of Asia **Mawlynnong** hails us. We will visit all the sightseeing spots in Mawlynnong including waterfall and **root bridge**. Then, we will move towards other attractions en route, **Makdawk viewpoint**, **Garden of caves** and wading through some breathtaking turn and twist of the roads, we reach the rainiest spot on the earth, the picturesque Cherrapunjee. Stay at Cherrapunji.



**SPEND YOUR NIGHT AT CHERRAPUNJI**

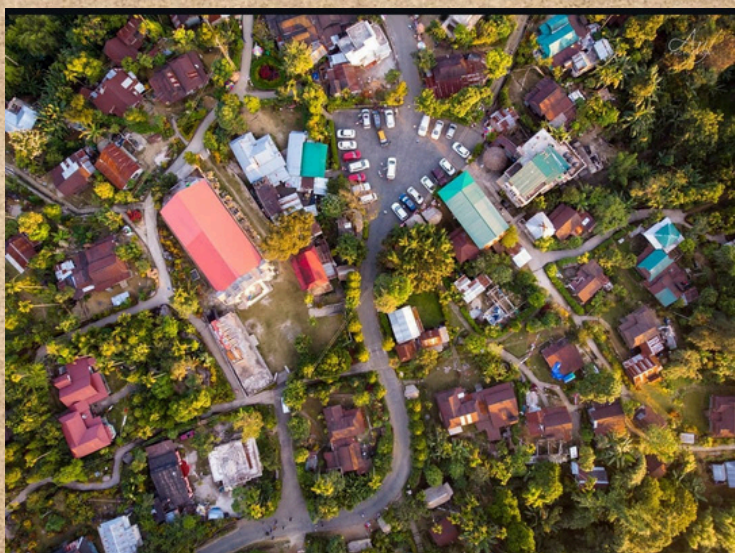


**GARDEN OF CAVES**



**MAKDAWK VIEW POINT**

**SINGLE ROOT BRIDGE**



**MAWLYNGLONG VILLAGE**

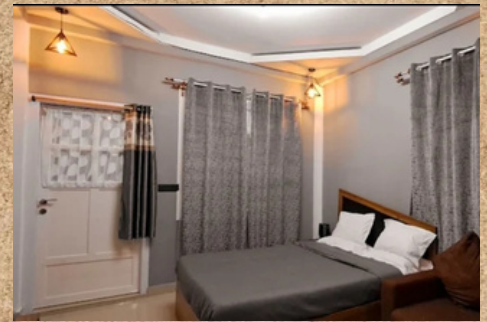
# ACCOMMODATION IN CHERRAPUNJI



Experience the stunning landscape of cherrapunji. Escape to the picturesque landscapes of khasi hills with our hand picked Hotels, HOME STAY & GUEST HOUSE. properties offer stunning views, modern amenities, and exceptional hospitality for a memorable stay.



## CHERRAPUNJI HOMESTAY-PERFECT FOR FAMILY



## CHERRAPUNJI APARTMENT



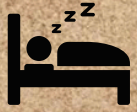
## CHERRAPUNJI RESORT



## CHERRAPUNJI LOCAL SIGHT SEEING



After breakfast, we will be visiting text book famous Cherrapunji, where the sign the rainiest place on planet Earth greets you. We will cover all the spots in Cherrapunji including, Nohkalikai Waterfalls, Mawsmai Caves, Seven Sister Falls, Eco Park, Thangkharang Park etc. After the full day of excitements, we will stay at our hotel in Cherrapunji.



## SPEND YOUR NIGHT AT CHERRAPUNJI



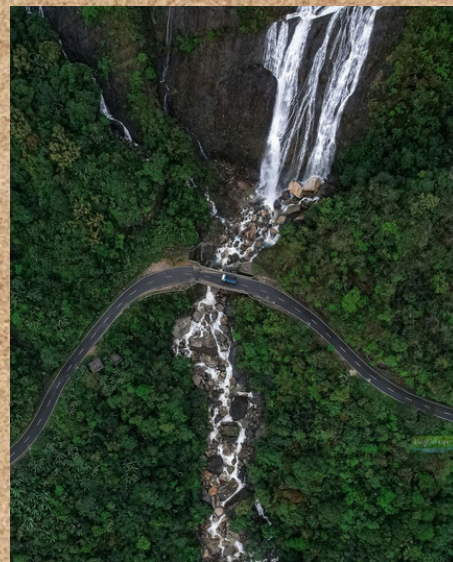
**ECO PARK**



**SEVEN SISTERS FALLS**



**ARWAH CAVES**



**KYNREM FALLS**



**NOHAKALIKAI FALLS**



**MAWSMAI CAVES**



## 📍 CHERRAPUNJI **TO** ➡️ 📍 GUWAHATI



Post breakfast, we will start our return journey towards Guwahati. On the way we will stop at few attractions. Later we will drop you at Airport/Rly station as per your departure schedule with the sweet memories of the trip with "Northeast Ninjas". Please book the evening flight/train for better experience.



**DROP ANYWHERE IN GUWAHATI.**



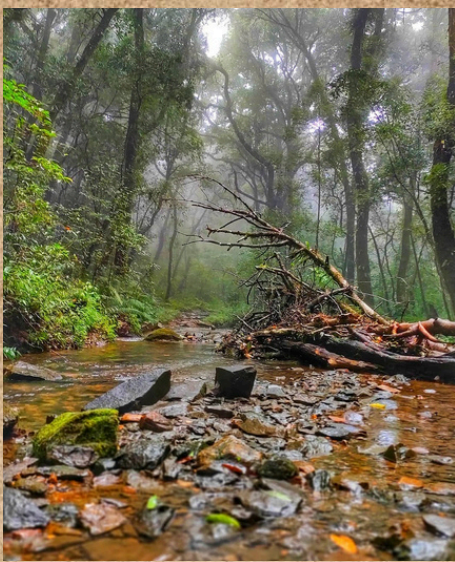
**WEI-SADONG FALLS**



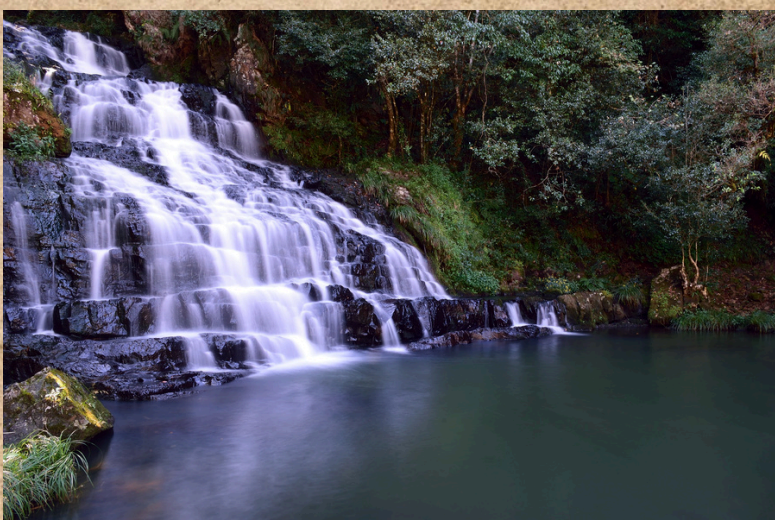
**PRUT FALLS**



**LYNGKASIAR FALLS**



**MAWPHLANG SACRED FOREST**



**MAWSAWA FALLS**





## INCLUSION

- ✓ ACCOMMODATION AS MENTIONED SHARING BASIS, BREAKFAST AND DINNER FOR ALL DAYS
- ✓ ALL TRANSPORTATION WILL BE ORGANIZED BY US THROUGH AN DEDICATED AIR-CONDITIONED VEHICLE WITH A PROFESSIONAL DRIVER.
- ✓ BREAKFAST AND DINNER ARE INCLUDED IN THE PACKAGE.
- ✓ PICKUP AND DROP FROM GUWAHATI AIRPORT / RAILWAY STATION/BUS STATION
- ✓ ALL SIGHTSEEING, LAND TRANSFER & INTER HOTEL TRANSFER
- ✓ ALL SIGHTSEEING, LAND TRANSFER & INTER HOTEL TRANSFER
- ✓ DRIVER ALLOWANCE, TOLL, PARKING, ROAD TAX, FUEL CHARGE, NIGHT HALT, INTERSTATE CHARGES, KAZIRANGA FOREST TOLL AND FOREST GUARD WELFARE FEES ARE INCLUDED.
- ✓ CHILD BELOW 5 YRS SHARING SAME BED WITH PARENTS WILL BE COMPLIMENTARY AND WILL BE ACCORDING TO HOTEL RULES.



## EXCLUSION

- ✗ ALL PERSONAL EXPENSES INCLUDING ALL OTHER ACTIVITIES NOT MENTIONED IN THE ITINERARY
- ✗ MEALS THOSE NOT AVAILABLE ON THE ITINERARY.
- ✗ ENTRY FEES OF SIGHTSEEING SPOTS, CAMERA FEES AND OPTIONAL ACTIVITY/SERVICE COSTS LIKE RAFTING, TREKKING, GUIDE FEES ETC ARE NOT INCLUDED IN THE PACKAGE.
- ✗ ANYTHING NOT MENTIONED IN THE 'INCLUSIONS' PART.
- ✗ FOR FOREIGN NATIONALS, SURCHARGES LIKE NATIONAL PARK ENTRY FEES, PROTECTED AREA PERMIT AND MANDATORY GUIDE FEES (FOR ARUNACHAL STATE TRIPS) ARE EXCLUDED.



BOOK NOW



7002862735  
6290771585

CHECK OUR REVIEWS



northeastninjas04@gmail.com



www.northeastninjas.com

